

COMPREHENSIVE CLINICAL RESEARCH SOLUTIONS TO SUPPORT IMMUNE-MEDIATED INFLAMMATORY DISEASE RESEARCH

As one of Signant’s core therapeutic areas of focus, our SmartSignals evidence generation ecosystem supports immune-mediated inflammatory disease (IMID) research programs from protocol design through regulatory submission. We combine full-time scientific expertise across dozens of IMID indications with technology solutions and globalized project delivery services to help you bring better disease-modifying treatments to people in need.







ADDRESS COMMON IMID RESEARCH CHALLENGES

- Reduce participant and caregiver burdens
- Safeguard endpoint data
- Accelerate and streamline study operations
- Enable multinational research
- Supplement study teams with additional clinical expertise

SIGNANT SMARTSIGNALS SOLUTIONS

With a full range of solutions that support enrollment, randomization, informed consent, COA data capture, endpoint reliability, data management, and scientific advisory, Signant is prepared to support IMID indication studies regardless of how and where they are conducted.

Signant SmartSignals™

 PATIENT ENGAGEMENT	 IP MANAGEMENT	 SITE ENABLEMENT	 CLINICAL OUTCOME ASSESSMENTS	 DATA ANALYTICS	 SCIENTIFIC AND CLINICAL CONSULTING			
eConsent	Engage	RTSM	Supplies	Telemedicine	Virtual Monitoring	eCOA	Analytics	Advisory

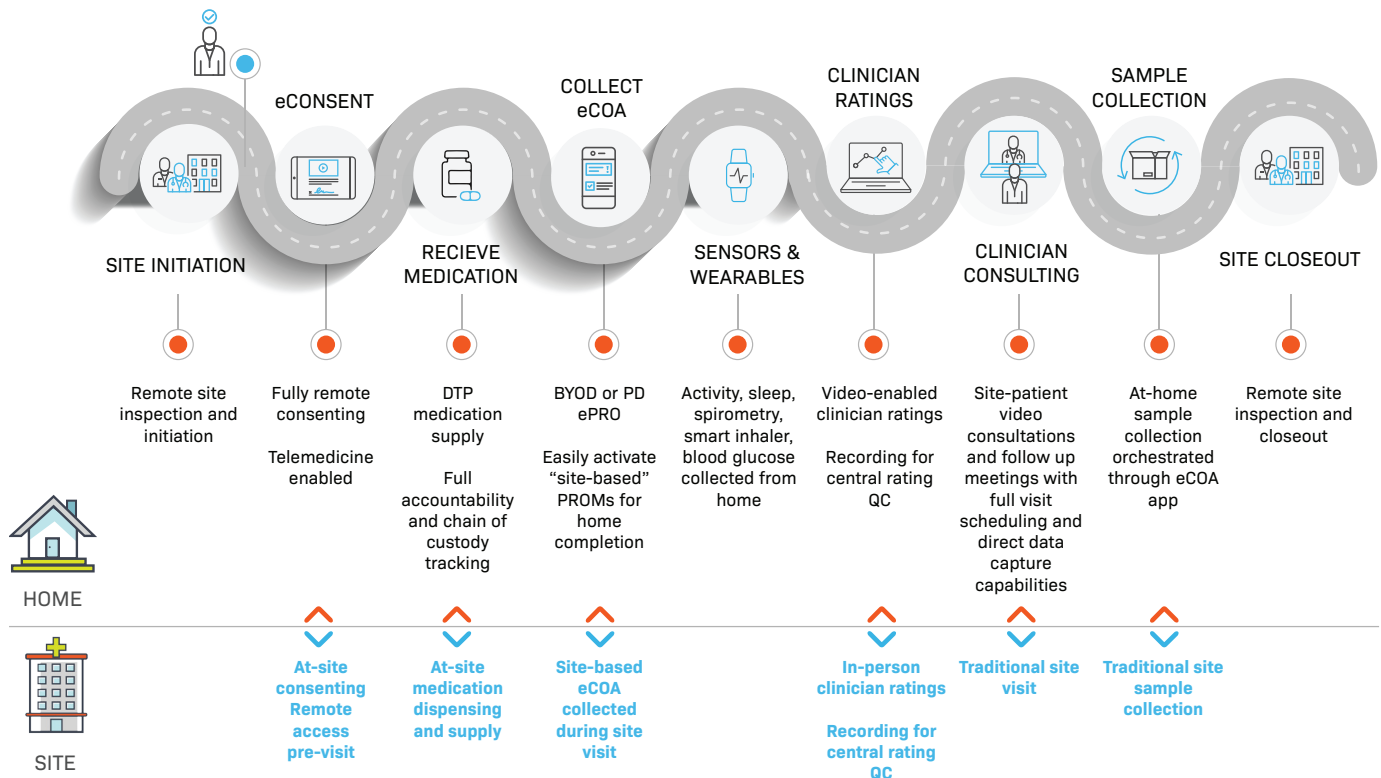
SAMPLE IMID INDICATIONS

Our focus in IMID studies revolves around ensuring you capture the highest quality endpoint data regardless of protocol design and study requirements. Click on each to learn how to apply our solutions in these sample IMID indications:

- [Atopic Dermatitis](#)
- [Rheumatoid Arthritis](#)
- [Lupus](#)
- [Cystic Fibrosis](#)
- [Type 1 Diabetes](#)
- [COPD](#)
- [Asthma](#)
- [Inflammatory Bowel Disease](#)
- [Psoriasis](#)
- [Alopecia](#)
- [Myasthenia Gravis](#)
- [NASH](#)
- [Graft Versus Host Disease](#)
- [Multiple Sclerosis](#)
- [Chronic Urticaria](#)

EXPLORE THE PATIENT DATA JOURNEY

Click the image to explore our interactive patient data journey demonstrating how SmartSignals solutions provide the flexibility and agility needed for traditional, hybrid, or fully decentralized study designs.



ABOUT SIGNANT HEALTH

Signant Health is the evidence generation company. We are focused on leveraging software, deep therapeutic and scientific knowledge, and operational expertise to consistently capture, aggregate, and reveal quality evidence for clinical studies across traditional, virtual, and hybrid trial models. For more than 20 years, over 400 sponsors and CROs of all sizes – including all Top 20 pharma – have trusted Signant solutions for remote and site-based eCOA, eConsent, RTSM, supply chain management, and data quality analytics. Learn more at www.signanthealth.com.