



DELIVER LIFE-IMPROVING TREATMENTS TO PEOPLE LIVING WITH RHEUMATOID ARTHRITIS

Clinical trials for Rheumatoid Arthritis (RA) have produced promising therapies but are complex and nuanced. Signant Health can apply decades of clinical science and medicine experience, as well as innovative clinical trial technologies within our SmartSignals® platform, to help researchers detect safety and efficacy signals while increasing the quality and reliability of data generated.

eCOA IMPROVES PRO DATA QUALITY

Signant's eCOA platform digitizes and improves PRO data collection for RA studies, as well as simplifies participation for patients. Instruments from our eCOA library reduce site and study team burdens by enabling rapid, off-the-shelf use. Signant's tablet-based solution helps RA participants complete instruments at site more comfortably and accurately than pen and paper.

REDUCE WASTE IN BIOLOGICS & STUDY SUPPLIES

Investigational compounds for RA studies are expensive and often have short expiration windows. Contain costs with Signant's RTSM solution, which can be deployed rapidly to help sponsors reduce waste, reconciliation and returns, and the overall number of shipments required.

ASSESS SLEEP AND PHYSICAL ACTIVITY MEASURES

Given that RA impacts sleep and physical activity, investigators can monitor this activity and eCOA within one system for a holistic patient assessment. Signant integrates ActiGraph with our eCOA platform to provide an objective method to assess the relationship between the disease and activity/sleep, that is burden-free for the patient.

Signant's end-to-end suite of evidence generation solutions and accompanying clinical science and medicine expertise reduce burdens for Rheumatoid Arthritis trial participants and study teams while generating more accurate, reliable data to facilitate the development of life-improving treatments.

OPTIMIZE CLINRO ACCURACY & ENDPOINT RELIABILITY

Effectively manage risks to endpoint data quality with Signant's Electronic Clinician Ratings and PureSignal Analytics. Guide raters through complex ClinROs, ensuring consistent scoring/administration and adherence to scale rules.

Identify, correct, and prevent quality issues throughout the course of your RA study – Signant's PureSignal Analytics combines proprietary algorithms with expert in-house clinician interpretation and mitigation. It ensures sites and raters adhere to protocol and administer ratings correctly, safeguarding endpoint data reliability and signal detection.

COMBINE SOLUTIONS FOR OPTIMAL STUDY EFFICIENCY

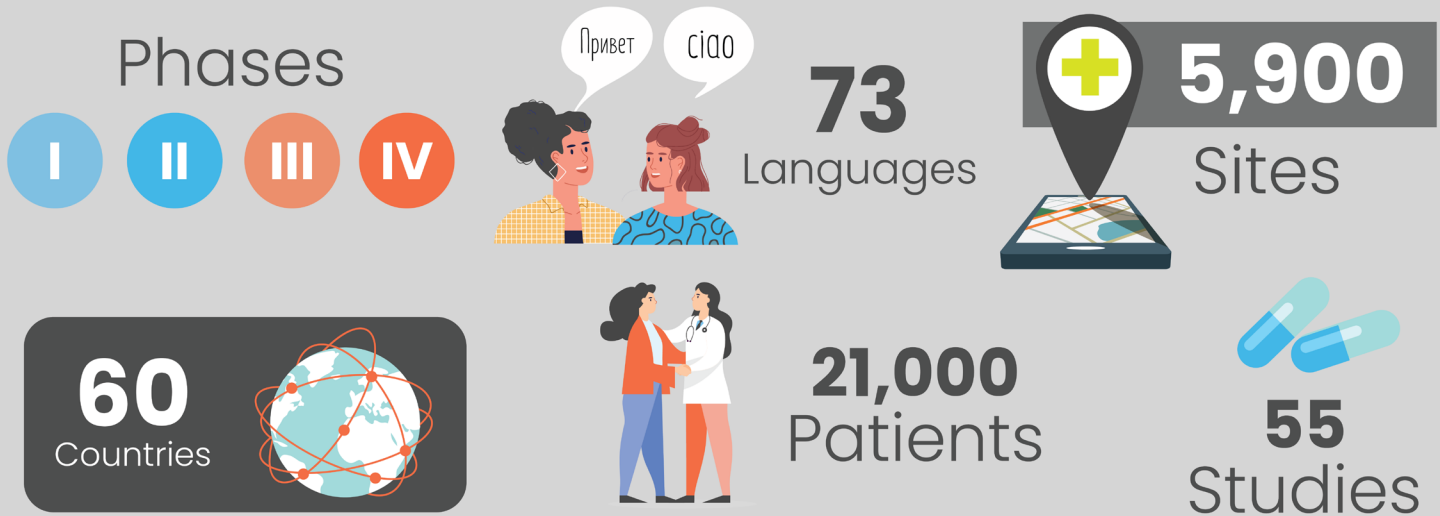
Each of Signant's solutions and services can be leveraged individually but offer greater workflow efficiency and improved end-to-end clinical data accuracy when combined.

COMMON LIBRARY MEASURES USED IN RHEUMATOID ARTHRITIS

- EQ-5D-5L
- WPAI-RA
- HAQ-DI
- SF-36v2
- FACIT-Fatigue
- BASDAI

ASK US FOR A COMPLETE LIST.

SIGNANT'S RHEUMATOID ARTHRITIS CLINICAL TRIAL SOLUTIONS EXPERIENCE IN THE PAST 5 YEARS



SMARTSIGNALS SOLUTIONS

The SmartSignals solutions can be used individually or integrated together for a seamless, end-to-end digital experience.

eCOA



RTSM



Activity Monitoring



Endpoint Quality



DISCUSS YOUR NEXT STUDY WITH US

Our global team of therapeutic area experts advise on all areas of the clinical development process, including:

- Clinical science and medicine
- Data analysis
- Regulatory
- Operations and trial administration
- Global logistics



MEET THE EXPERTS