

# DEVELOP NEW TREATMENT OPTIONS, ONE ENDPOINT AT A TIME



Pancreatic cancer often goes undetected until it has reached an advanced stage, at which point it becomes difficult to treat. Researchers are working to develop new and effective therapies for better prognoses, but they need the right tools. Signant Health's SmartSignals solutions can generate accurate and reliable evidence while offering a patient-centric experience.

## **CAPTURE BETTER COA DATA, FASTER**

Signant's pre-configured eCOA solution features a library of validated, disease-specific instruments to accelerate study startup times. Capture real-time insights into the patients' symptoms, satisfaction with the treatment, as well as the treatment's effect on their quality of life. Plus, this approach to ePRO helps study teams launch 33% faster.

## **GAIN RICHER INSIGHTS**

Help your study team collect accurate data about treatment effects on patient function. We integrate ActiGraph with our eCOA system to automatically collect sleep and activity data without additional burden on patients or sites. Study teams can view this data alongside COA data for a more complete evaluation of patient function.

## **OPTIMIZE SUPPLY MANAGEMENT**

Randomization & Trial Supply Management (RTSM) handles multiple patient cohorts and adaptive dosing schedules involved in pancreatic cancer research with ease. We also utilize unique algorithms to minimize waste as well as an agile-based design approach that helps study teams launch quickly. Reduce unnecessary site visits, improve inter-visit remote collaboration between sites and patients, and help protocol adherence.

## **SIMPLIFY CONSENT & RECONSENT**

Choose any of our tiered eConsent solutions to help convey complex information about the study and disease to patients. The solution lets patients flag sections they need clarified and checks their comprehension for a truly informed consent. It manages protocol amendments and the re-consent process, so that the correct forms are always completed.

## **REDUCE ON-SITE VISITS**

Our secure and compliant Telemedicine solution replaces on-site visits with convenient video consultations, making it possible to reach a wider, more diverse patient population. The virtual platform allows study teams to frequently check in and communicate with patients.

## **DIGITALIZE THE ENTIRE PROCESS**

While all of our solutions can be used as standalone tools, they can be combined for a fully digitalized process that further enhances the accuracy and efficiency of your pancreatic cancer study.

At Signant, our focus is helping you develop and deliver treatments or therapies faster in order to improve the quality of life for people living with pancreatic cancer.

# SIGNANT'S PANCREATIC CANCER CLINICAL TRIAL EXPERIENCE

## Phases



16

Languages

720+

Sites



29  
Countries



2,700  
Patients

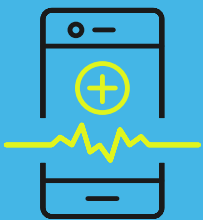


9  
Protocols

## SMARTSIGNALS SUITE

SmartSignals solutions can be used individually or integrated together for a seamless, end-to-end digital experience.

### Pre-Configured eCOA



### Activity Monitoring



### RTSM



### eConsent



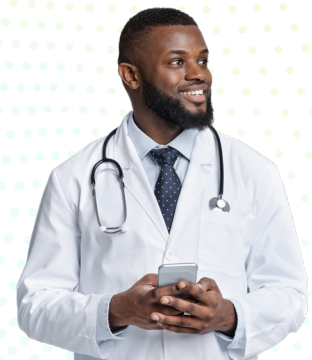
### Telemedicine



## DISCUSS YOUR NEXT STUDY WITH US

Our global team of therapeutic area experts advise on all areas of the clinical development process, including:

- Clinical science and medicine
- Data analysis
- Regulatory
- Operations and trial administration
- Global logistics



MEET THE EXPERTS