

# CLINICAL DEVELOPMENT SOLUTIONS TO IMPROVE GLIOBLASTOMA MULTIFORME RESEARCH

With numerous barriers limiting progress in drug development for glioblastoma multiforme (GBM), it remains an area with few effective therapeutic options. Your GBM research program represents hope to millions of patients living with this rare neuro-oncological disease. Signant Health's SmartSignals™ solutions can address specific research challenges so you can **deliver new and better treatment options.**

## CAPTURE BETTER COA DATA

Capture high quality assessment data to support your GBM study endpoints with an eCOA platform designed for the complexities of oncology research. With pre-validated library instruments and study design templates, you can launch significantly faster. Our clinical science and operations experts support your study team from launch to closeout.

## STREAMLINE CONSENT & RECONSENT

Choose any of our tiered eConsent solutions to help convey complex information about the disease and study to patients without the burden of travel. We manage multiple consents common in oncology studies, ensuring up-to-date ICFs and limiting the risk of inspection findings.

## GAIN OPERATIONAL EFFICIENCY

Signant's RTSM system utilizes unique algorithms to implement intricate randomization schemes rapidly as well as optimize product usage and efficiency. Our system and dedicated team help you launch faster, manage mid-study changes with ease, and support trial operations no matter how or where you conduct research.

## INCREASE RATINGS ACCURACY

Ensure that the raters and investigative staff administer assessments or measures in your GBM study correctly and consistently. Our Rater Training program can be customized to cover performance outcomes, cognitive assessments, or even sensors and wearables, improving the reliability of the data these measures generate.

## MINIMIZE PATIENT BURDEN

Reducing the need for travel eases a major burden of clinical trial participation for GBM patients. Leverage our multifunctional Telemedicine platform to monitor patients, offer them a virtual walk-in clinic, as well as keep them enrolled and adherent. This platform caters to patients', sites', and sponsors' needs alike.

## ASSESS COGNITIVE FUNCTION

Evaluate the impact of GBM and treatments on patients' cognitive function throughout your study with our computerized battery of Cognitive Assessments. Highly sensitive and designed for repeated use, it has been used extensively in both CNS and oncology trials to detect impairments and improvements in cognitive function.

*At Signant, our focus is helping you develop and deliver treatments or therapies faster in order to improve the quality of life for GBM patients everywhere.*

# OVER 4000 NEUROLOGY & ONCOLOGY TRIALS IN PAST 5 YEARS



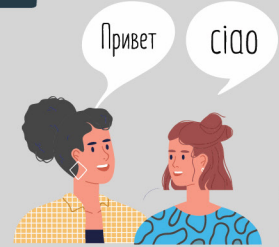
**3** GBM Studies

Phases



**320**

Sites



**27**  
Languages

**10**

Countries



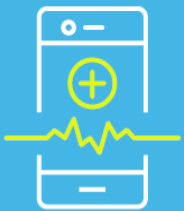
**1,100**  
Patients



## SMARTSIGNALS SOLUTIONS

The SmartSignals solutions can be used individually or integrated together for a seamless, end-to-end digital experience.

eCOA



Rater Training



Telemedicine



eConsent



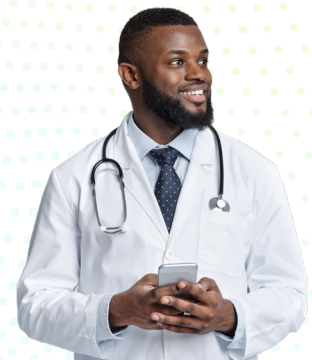
RTSM



## DISCUSS YOUR NEXT STUDY WITH US

Our global team of therapeutic area experts advise on all areas of the clinical development process, including:

- Clinical science and medicine
- Data analysis
- Regulatory
- Operations and trial administration
- Global logistics



**MEET THE EXPERTS**