

PATIENT-CENTERED TRIAL SOLUTIONS FOR IMPROVED CHF RESEARCH OUTCOMES



CAPTURE HIGH-QUALITY PRO DATA

Signant's eCOA solution provides clinicians and patients with tools to improve the assessment experience: Electronic administration of PROs such as CaReQoL, KCCQ, and MLHQ makes it easier to complete them at home or site, and produces more reliable data. Video-assisted patient engagement features within a single patient app also help keep participants on track and adherent.

MAXIMIZE STUDY IP EFFICIENCY

Take control of supply management for numerous medications and simplify randomization for multi-arm trial designs with Signant's global RTSM solution. Our agile design process will help you launch quickly and manage mid-study changes with ease. Plus, a dedicated team of biostatisticians and logistics experts experienced in CHF protocols will support your program no matter how or where you conduct trials.

MAKE STUDY PARTICIPATION MORE CONVENIENT

CHF patients suffer from shortness of breath, fatigue, and mobility challenges that make it difficult to travel to the clinic for study visits. Signant SmartSignals Telemedicine provides a comprehensive platform to make virtual visits easy for patients and sites alike: Patients can self-schedule assessments and request "walk-in" consultations, and sites can conduct more frequent safety and monitoring check-ins.

Despite advances in the management of congestive heart failure (CHF), morbidity and mortality remain high, emphasizing the need for continued research to develop new and improved treatments.

At Signant, our **global cardiovascular clinical development expertise, scientific leadership, and patient-centered solutions** within Signant SmartSignals suite help sponsors and CROs capture reliable endpoint data while optimizing the participation experience.

SUPPORT ENDPOINTS WITH OBJECTIVE PHYSICAL ACTIVITY DATA

Signant SmartSignals eCOA makes it easy to capture real-time, objective physical activity data with no additional burden on patients. Seamless integration between the wrist-worn ActiGraph device and our eCOA solution enable study teams to view objective measures of physical activity alongside COA data, providing a more comprehensive understanding about how CHF symptoms and treatments impact patients' quality of life.

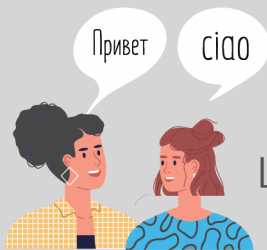
DIGITALIZE GLOBAL STUDIES

While all of our solutions can be used as standalone tools, they can be combined for a fully digitalized process that optimizes the trial participation experience for sites and patients while enabling globalized operations.

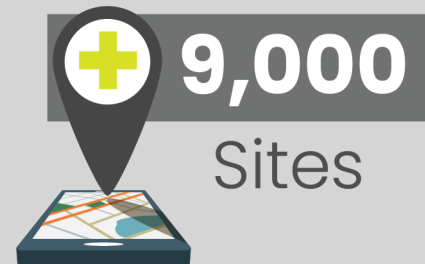
At Signant, our mission is to help you develop and deliver new treatments or therapies faster in order to improve the quality of life for those living with congestive heart failure.

SIGNANT'S CARDIOVASCULAR CLINICAL TRIAL EXPERIENCE

Phases



65
Languages



9,000
Sites



40
Countries



35,000
Patients

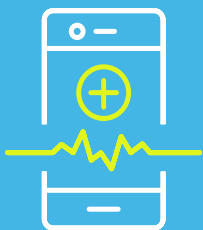


115
Protocols

SMARTSIGNALS SOLUTIONS

The SmartSignals solutions can be used individually or integrated together for a seamless, end-to-end digital experience.

eCOA



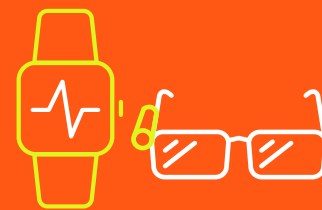
Telemedicine



RTSM



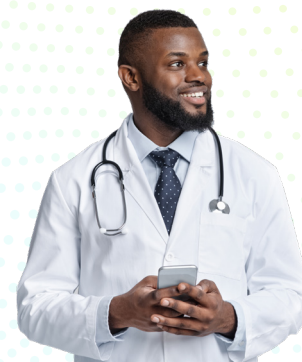
Sensors & Wearables



DISCUSS YOUR NEXT STUDY WITH US

Our global team of therapeutic area experts advise on all areas of the clinical development process, including:

- Clinical science and medicine
- Data analysis
- Regulatory
- Operations and trial administration
- Global logistics



MEET THE EXPERTS